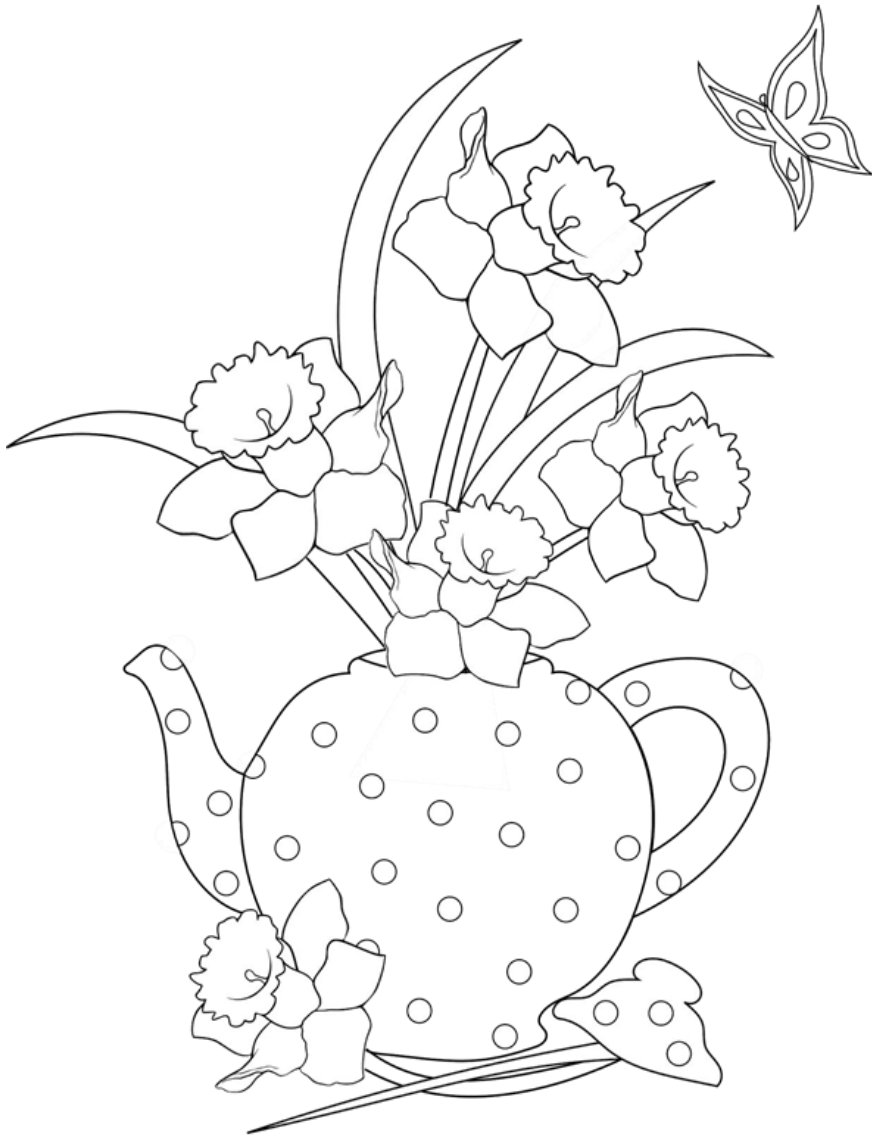


# WESTON VILLAGE FETE



# BLOOMING GREAT TEA PARTY

# COLOURING COMPETITION

## ENTRY FORM

All entries to be delivered on the day to the Village Hall  
before 4pm or have a go on the day

Age groups: Up to age 7

Ages 7 - 11

Ages 12 - 16

Ages 17 and over

Prizes for 1<sup>st</sup> place in each category and specials at  
the discretion of the judge.

Name.....

Age .....

Telephone / email .....

NEWSLETTER  
WAPPENBURY EATHORPE WESTON  
HUNNINGHAM

## EDITOR & ADVERTISING MANAGER

Editor: Katie Alcock 634779 [oxfordflutes@yahoo.co.uk](mailto:oxfordflutes@yahoo.co.uk)

Advertising manager: Moira Rawlings 634766 [moirarawlings@btinternet.com](mailto:moirarawlings@btinternet.com)

### JUNE 2016 DIARY

11-12 June	Hunningham Open Gardens
14 June	Eathorpe Coffee Morning 10.30am
18 June	3-5.30pm Wappenbury Church Working Party
25 June	Weston Village Fete 1-7pm

### VILLAGE NEWS - WAPPENBURY

#### With a little help from our friends...

The Friends of Wappenbury Church group was set up just over a year ago to help support the maintenance and upkeep of the church building. At the annual meeting of the church council, held on 12th May, we learnt that donations from the "Friends" were almost sufficient to pay for the cost of the church's annual insurance (£2,200) - a fantastic achievement! Nevertheless, keeping this beautiful historic building open to the public involves a lot more than simply insuring it. We've just received results of the five-yearly structural survey by our architects which highlights some major repairs ( masonry repairs to the tower, for example) but also many small items, where a "stitch in time" (such as cutting back ivy and clearing weeds from the French drains) is needed. To make a start on these, we're organising a **working party on Saturday 18th June from 3 - 5.30pm.** Refreshments will be provided - there could even be a glass of wine at the end! Even if you can only spare an hour, your help would be greatly appreciated.

If you have not yet joined the Friends scheme and would like to make a regular donation towards the maintenance of the church building, please email [sjtb.wappenbury@tesco.net](mailto:sjtb.wappenbury@tesco.net)

Many thanks,

David Ellis 632964



## VILLAGE NEWS - WESTON



### CONGRATULATIONS TO WESTON MARATHON RUNNER!

Huge congratulations to Weston resident Sarah Arnold on running the London Marathon last month, in a fantastic time of 4 hours 13 minutes.

Her friends and family are all enormously proud of her!

**Rich Berrisford**

**MONDAY CLUB** The May Meeting held at Glebe Cottage heard a fascinating talk by Tim Foden, Secretary of Warwick and Leamington Beekeepers, on the whole lifespan of bees. What remarkable and interesting little creatures they are! As always we enjoyed an excellent tea. The next meeting, AGM and Strawberry Tea will be held at Devon Cottage Weston the home of Kate and Stephen Spencer-Richards on Monday 13th June.



**Valerie Evans**

### WESTON TODDLERS - FRIDAYS

Toddlers continues every Friday in term time, in Weston Village Hall 9.30-11am. Please check our facebook page for details, including dates for the monthly health visitor drop in.

#### DATES FOR YOUR DIARIES:

Friday 3rd June Half Term - NO TODDLERS

Friday 17th June - HEALTH VISITOR DROP IN CLINIC 9.30 -10.30

Friday 15th July - SUMMER PARTY

**Please note that we are breaking for the summer one week earlier than Warwickshire schools on Friday 15th July.**



## Weston Open Gardens 2017

Are you proud of your garden? Large, small, traditional or contemporary, whatever your style, you could help us raise money for the National Gardens Scheme whose charities include Marie Curie and Macmillan, and for our local charities.



Call Peter Haine on 633153 or Bren Boardman on 633720.

# VILLAGE NEWS - EATHORPE

## EATHORPE

**Eathorpe Coffee Morning** will be held on Tuesday, June 14th in the village hall, from 10.30 -12o'clock. Please join us, everyone welcome.

**Jill Wheeler**



## **DOG WALKERS – PLEASE CLEAR IT AWAY !!**

This is a reminder to please clear up after your dog on the footpaths in Hunningham, Wappenbury and the surrounding area.

If you haven't got a bag then try to move it off the footpath with a stick or something appropriate to make it pleasant for all users.

## NEWSLETTER SUBSCRIPTIONS £5

Thanks to those of you who have paid in the last month the £5 to cover the printing costs for ten issues per year.

**We still hope that every household will make a contribution!**

Please send your subscriptions, cash or cheque, to any of the following. Please complete the slip and cut out as indicated. We really want to continue providing the service which so many have said they like!

**PS Articles for inclusion welcome! Keep them coming, please!**

Eathorpe / Wappenbury: Jill Wheeler, The Mill House, Eathorpe

Hunningham: Moira Rawlings, 3 Elm Farm Cottages, Hunningham

Weston under Wetherley: Robert Birkmyre, Martins Hatch, Rugby Road, Weston

Name.....

Address.....

email (optional).....

Amount enclosed £.....or cheque made out to "The Hunningham Magazine"

## VILLAGE NEWS - HUNNINGHAM

**SAD NEWS:** Harry Wragg who was born in Hunningham, went to Hunningham School, and lived his younger life here, died on 7<sup>th</sup> May 2016 aged 81 years. Harry lived in Elm Farm Cottages. His mother died when he was very young, and Harry was adopted by his Aunt, Olive Rouse's mother. Harry had a love of plants, and worked all his life at the Jephson Gardens Nursery, where he was Nursery Manager. His funeral and burial were on 23<sup>rd</sup> May at Hunningham Church. He will be sadly missed.

**THANK YOU** to the few who came and helped spring clean Hunningham Church and graveyard on Saturday 14<sup>th</sup> May. It is certainly looking much better.

Hazel Taylor



### HUNNINGHAM OPENS ITS GARDENS ON THE QUEEN'S BIRTHDAY WEEKEND!

Hunningham village is opening its gardens under the auspices of the National Gardens Scheme on Saturday and Sunday 11 and 12 June from 12.30 to 5.30 each day. Seven gardens will be open. Teas, coffees and home-made cakes will be available in the Parish Room. There will be an exhibition of paintings by local artists in the church. Plant sales and sales of greeting cards by a local artist will be located in front of the Vicarage. Entrance fee of £4.50 includes all the gardens, and children are free. Come and support a local event and help us raise funds for the National Gardens Scheme charities and for the fabric of the local church.

We are also looking for help with teas, parking and plant sales. If you could spare a couple of hours on the Saturday or Sunday afternoon, can you please let us know by calling Margaret and Pete Green on 01926 632903.

We would also welcome home made cakes for use with the teas/ coffees and if you have any spare plants for the plant stall, we would be pleased to have them.



## NEIGHBOURHOOD WATCH



After a couple of months with more burglaries than we have had for a while, April/May (so far) have been a lot quieter, although I did get reports of some suspicious activities in Eathorpe by the allotments there. Hopefully nothing got stolen or broken there.

With no other crimes reported by the police this time, I'm including, for your information the contact details for the Police. ( WRE stands for Warwickshire Rural East, and SNT for Safer Neighbourhood Team) . This is an extract from the latest Police Newsletter:

### *"WRE SNT Contact Details*

*If you would like to speak to a WRE SNT officer about any local concerns or issues then please contact the team on 01926 684471 or you can email the team wre.snt@warwickshire.police.uk. The team aims to respond to all messages within 24 hours (rest days, absences etc, may cause a delay in responding). Please note the above telephone number/email address for Warwick Rural East SNT is not manned 24/7.*

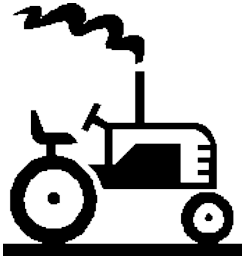
*If you wish to report an incident/crime, please contact Warwickshire Police. In an emergency dial 999. All non-emergency calls dial 101."*

Paddy Taylor 632428

## CHURCH SERVICES

Sunday 5th June	11am Wappenbury	3 Parishes Holy Communion Service	
Sunday 12th June	10am Offchurch	4 Parishes Holy Communion with Sunday School	
Sunday 19th June	11am Weston	Holy Communion	
Sunday 26th June	11am Hunningham	Come2Worship with Junior Church and the Pilgrim Puppets	

## FARMER'S DIARY



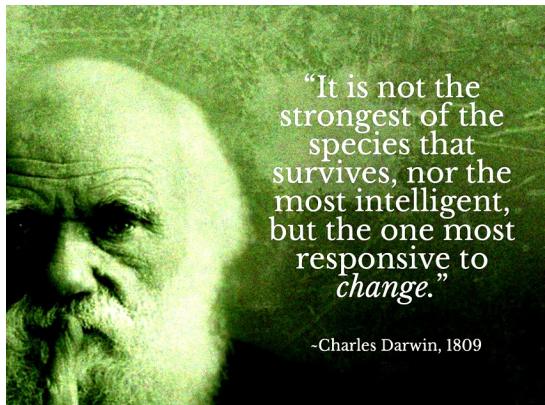
Anyone who may have read this diary may be forgiven for thinking I have an unhealthy preoccupation with slugs. And you would be right. I even go out with a torch last thing at night and pick the slimy enemy from the runner beans. Then spend hours trying hours trying to clean the slime from my bare hands. We have tried to increase soil livestock

especially earthworms by the use of covered crops, not allowing the soil to be exposed for long, sucking in carbon and conserving moisture, but our downfall has been that every undisturbed slug has bred with vile alacrity.

We are relieved that there is now a more sensible director of the RSPCA because we are conducting live experiments with captured slugs. One is testing the theory that rolled oats will blow them up or death by porridge as opposed to beer. Another is living with a large black beetle and so on. In fact the beetles appear to be increasing in the fields but still cannot keep up with the slugs.



Now back to earthworms. Darwin said *"It may be doubted whether there are many other animals which have played so important a part in the history of the world as these lowly organised creatures"* and *"Without the work of this humble creature who knows nothing of the benefits he confers upon mankind, agriculture, as we know it would be very difficult if not wholly impossible."*





## FARMER'S DIARY

Darwin spread quick lime and coal cinders onto pasture. He then observes for an amazing 21 years how earthworms cover up and eventually bury the two layers, which are to become his measuring markers. The average annual increase of thickness for the whole period is 1.9 of an inch. He was in effect growing topsoil.

Anyway enough of marauding molluscs and more of the beauty that surrounds us. Last night we heard such a loud and glorious bird song that we searched with binoculars for some bird as large as a condor hiding in the shrubs but up atop a tree sang a chaffinch no doubt bursting with joy at the sight of all the wild bird cover being planted on farms at the moment.



These moments are there if we only care to look. I worry that the preoccupation we all have with sat nav and artificial intelligence is developing a race so far removed from the hunter gatherers we once were that we will no longer notice the things that matter. I still hunt and gather so when I heard a speaker at a recent meeting telling us about the latest technology to vary application rates of fertilizer and fungicides by shining smart sensors upon the crop as the machine travels I wondered where on earth the boffins will take us in the next 20 to 50 years. Perhaps if there is someone in the tractor cab they can just listen to the test match or even spot a lapwing trying to see off a buzzard. This technology is German and supported by green tax dodges and grants. By the way which way are you voting in the referendum?

**Andrew McGregor Weston Hall Farm**

# WESTON UNDER WETHERLEY VILLAGE FETE



**at Weston Village Hall and Playing Fields**  
**Saturday 25th June 2016 1-7pm**

## PROGRAMME OF ACTIVITIES

### 1pm onwards

BBQ on the field   Tea and Cakes in the Hall   Ice cream Van   Beer Tent  
Crafts and Stalls  
Decorative Pictures and Signs   Hand Painted Decorative Eggs  
2nd Hand Books   Face Painting   Hula Hoops   Hook a Duck  
Sponge Throwing   Decorate a Gingerbread Man  
Newsletter Colouring Competition   Save The Planet Poster Competition  
Bee Keeping   Bubbenhall First Responders   Vehicle Display

### 1pm start

#### RACES FOR ALL AGES

Sack Race   Egg & Spoon   3 Legged Race   Wheelbarrow

#### TUG OF WAR



### 3pm start

#### DOG SHOW

Rosettes to 3rd place sponsored by Bell & Ptrs Veterinary Surgeons

Class 1 Waggiest Tail

Class 2 Best Treat Catcher

Class 3 Best Golden Oldie age 8+

Class 4 Best Trick

Class 5 Best Family: 2 or more dogs in one household

Class 6 Best In Show



### 4pm

#### ANNOUNCEMENTS

Silent Auction   Raffle Draw   Colouring & Poster Competition Results

### 5-7pm

**DISCO** with Big Man Craig

# WESTON UNDER WETHERLEY VILLAGE FETE



## CAKE DONATIONS PLEASE.

If you would like to donate a cake or two for afternoon tea, please deliver on Saturday morning to the Village Hall. Thank you.

## BLOOMING GREAT TEA PARTY 2016

This year the fete is being themed as a blooming great tea party in support of Marie Curie. We hope you will all join our Blooming Great Tea Party and help us raise some funds for a very worthy cause.

We have a justgiving page for any donations you would like to make, or there will be a chance to help the cause at the fete.

[www.justgiving/WestonVillageFete](http://www.justgiving/WestonVillageFete)

**THANK YOU**



## WESTON UNDER WETHERLEY VILLAGE FETE

# Silent Auction



- LOT 1 One week in a lovely 3-bed cottage in Norfolk near Sandringham
- LOT 2 B&B for two at Wethele Manor
- LOT 3 One delicious cake a month for six months baked by Sue Keffler
- LOT 4 Sunday lunch and pudding for 6 cooked and delivered (locally) to your house by Carolyn Davis
- LOT 5 One day Trout Fishing for two on the beautiful River Monnow near Ross on Wye
- LOT 6 Full English Breakfast for two at Hilltop Farm Hunningham

All further details and Advance Bids to Stephen Evans 632521

**HAPPY BIDDING!**

***All proceeds from the auction will go to the Church Toilet Fund.***



### PHOTOGRAPHS



Please note that photographs will be taken of this event for local records and future publicity. Anyone who does not wish themselves, family and friends to be photographed should inform the photographer of their request and all efforts will be made to respect their wishes.

# WESTON UNDER WETHERLEY VILLAGE FETE

Many thanks to the following donors for their generous Raffle Prizes:

Belvoir Lettings

The Craft Studio - gift voucher

Finlay McAllan – 4 tickets to the Motorcycle show 2016 at the NEC

Sarah Waters - Doggy Hamper

*And many others.*



## A BIG THANK YOU TO ALL OUR SPONSORS & DONORS

The Weston Fete Committee of Bren Boardman (Chair), Chris Garden, Glynis Hooper, Sue Keffler, Lucy Doggett, Mandie Bradshaw and Sue Chambers wish to thank all sponsors, judges, volunteers and supporters of the Weston Village Fete. In particular we would like to thank those who provided financial support and donors of prizes, Warwick District Council for the use of the playing field and the Village Hall Committee for the generous loan of the Hall at a nominal charge.

For any comments or enquiries contact Bren on  
brenboardman@me.com or tel 07769 913686

Visit our website at [www.westonunderwetherley.parishcouncil.net](http://www.westonunderwetherley.parishcouncil.net)  
and our facebook page at [www.facebook.com/WestonUnderWetherley](http://www.facebook.com/WestonUnderWetherley)



## EATHORPE ALLOTMENTS

Well, what a change in the weather! Last weekend was so hot and sunny, it turned the allotment field into that magical, peaceful place again! We have been lucky so far to have avoided the late frosts, the ones that dented last year's apple crop. At the moment, the apple trees are in full bloom, some less than expected but so many others are just laden with blossom, and the bees are working hard to help us to achieve a – hopefully – bumper crop this year.

Cultivating has been easy, and the potatoes are for ever growing upwards, but I notice that the bean canes are in place, all ready, and it seems that all the other crops are healthy and taking full advantage of the sun, warmth and also the rain.

We filled up all of the water tanks last weekend – the first of, no doubt, several group efforts. The lower field has been scarified, the weeds dealt with and new grass seed sown. Just the wild flower mixes to be strategically placed. I have saved some quantity of poppy seed – opium - springs to mind? – and will share some of those around the site soon.

We still have one full plot spare – do come and see what we have here and be enthused – and think of all of those fresh, organically grown vegetables – a little and often is the mantra for allotment gardening – but then you will all know that!

So, from Eathorpe Allotment Association, we wish you a very happy Spring and early Summer – I have 'farmers suntan' already – how are you doing? Happy growing

**Maurice Wood**

PS. The white transit van that has been roaming around the villages has been apprehended and the two gentlemen charged with offences relating to insurance, licences and using false registration plates. More charges may well follow, but it is a sigh of relief that this particular menace has been dealt with.



# WEATHER



April started unsettled under low pressure with showers and periods of rain although it was warm. This continued into the second week with a brief warmer spell from the 19th to 22nd. It then became colder towards the end of the month with occasional sleet or wet snow. It was wetter than normal and slightly cooler than average overall.

There were 17 days of measurable rain with the wettest days being the 15th and 11th with 10.5mm. The coolest days of 11C occurred 4 times and the warmest on the 18<sup>th</sup> gave us 18.5C

There were 3 frosts in April although the temperature only got down to -0.5C. There were 3 warmest nights at 8C.

Has anyone heard a cuckoo yet? The sound it makes is getting rarer and rarer.

**Mark Hancock 01926 632197 / 07801424003**

<b>APRIL 2016</b>		<b>Long term average</b>	<b>Highest recorded</b>	<b>Lowest rec- orded</b>
<b>Rainfall</b>	<b>65.75m m</b>	<b>46.994</b>	<b>126mm (1998)</b>	<b>1.75mm (2011)</b>
<b>Average max Daily temp</b>	<b>13.98C</b>	<b>14.1413C</b>	<b>18.4C (2011)</b>	<b>10.816C (2012)</b>
<b>Average min Daily temp</b>	<b>4.1666 C</b>	<b>4.5015C</b>	<b>7.5C (1995)</b>	<b>2.76C (1996)</b>
<b>Monthly Average temp</b>	<b>9.073C</b>	<b>9.3214C</b>	<b>12.38C (2011)</b>	<b>7.33C (2012)</b>

## ADVERTISE YOUR SERVICE OR BUSINESS HERE!

The Newsletter is hand delivered to all the houses in our 4 villages, over 350 copies, as well as sent to an increasing email list. The Newsletter is also published on the village website every month. Make use of this valuable local resource, and help keep it afloat at the same time.

Contact Moira [moirarawlings@btinternet.com](mailto:moirarawlings@btinternet.com) to place your ad.

### Current Advertising rates

(January to December or pro rata)

**Full Page £70**

**Half Page £50**

**Quarter Page £30**

### TODDLER CYCLING CLUB TASTER SESSION

Monday June 20th 1330-1440

Brambles' Cycling Club is a balance bike club for children aged 2 — 4 years.

The sessions will provide opportunities to take part in a range of activities both on and off bikes to develop balance, coordination and physical literacy.

All bikes and helmets are provided.

Cost 6.00 Call 07967 751785



### CUBBINGTON VILLAGE HALL

## DON'T FORGET THE LIBRARY IN WESTON CHURCH

.....with over 400 books, including novels, biographies and more. Open 8am-4pm every day, feel free to come in and have a look. Borrow as many books as you like, leave a small donation if you can.







## Selling your home?

Introductory offer, £800 off standard fees



Contact us for a free market appraisal  
on 01926 422251 or email

[amy.cunningham@belvoir.co.uk](mailto:amy.cunningham@belvoir.co.uk)

HILLTOP FARM  
**BEER & CIDER FESTIVAL**  
 10-12 JUNE 2016  
[HILLTOPFARMSHOP.COM/BEERFEST](http://hilltopfarmshop.com/beerfest)



**LIVE MUSIC  
 ALL WEEKEND**  
 .....  
**HOG ROAST & BBQ**  
 .....  
**FERRET RACING**  
**SHEEP DOG & DUCK DISPLAYS**



hilltopfarmhunningham



hilltopshop



hilltopfarmshop

## Painful feet?

Community Podiatrist in Weston  
 and surrounding areas

*Diabetes, nail care, corns and cal-  
 lous, pain and musculo-skeletal*

**hcpc** health & care  
 professions  
 council



Sarah Arnold  
 BSc (hons) Podiatry, MChS,  
 HCPC registered  
 07561862216 or [westonpod@gmail.com](mailto:westonpod@gmail.com)

# AIMS<sup>®</sup> ACCOUNTANTS FOR BUSINESS

## ***YOUR OWN BUSINESS?***

*Accounting and Taxation Service from  
a qualified professional with a keen pricing structure.  
All charges agreed in advance.*

*I will come round to you and  
there is no charge for first meetings.*

**Mike Fairbotham BSc FCA**

01926 887878

michaelf@aims.co.uk      www.aims.co.uk



## **Physiotherapy in Hunningham**

*Spinal, Sport Injuries, Musculo-Skeletal, Orthopaedic*

**Sonya Austin**

MCSP, HPC, GRAD.DIP.PHYS

**632 523 or 07973 105 231**

*Approved by all Insurance Funds, Doctor's Referral not necessary*



**Eddie Croxall**  
**Painter & Decorator**

1 Ellerton Grove  
Leamington Spa, CV31 1YN

Tel: 01926 882 420

Mobile: 07778 283 244

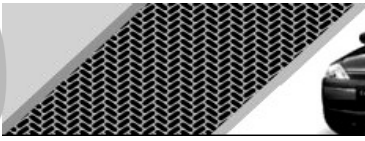




**PeterBrooke**

Plans drawn for Planning and Building Regulations for New Houses,  
House Remodelling, Extensions, Loft Conversions, Renovations.  
Free, no obligation, first meeting.

Tel 01926 633691  
Mob 07740213572  
email [peterbr@live.co.uk](mailto:peterbr@live.co.uk)



## APOLLO SCHOOL of MOTORING

Local driving school  
27 years experience  
Refresher and Intensive courses  
Theory test help  
Top grade instruction at competitive rates

Call Paul on **01926 632698** or **07771 686078**

[www.apolloschoolofmotoring.com](http://www.apolloschoolofmotoring.com)





## Cool Breeze Technology Services

**Specialised IT and Technology Support  
for the Retirement Community**

For all of your IT and technology needs. I have over 25 years of experience and undertake all work at your home. No job is too small so if you have issues with Wi-Fi, Windows has crashed or you are thinking about buying an iPad? Give me a call. I provide patient 1-2-1 tuition whilst I undertake my work so that you understand what I am doing and learn as I resolve your problems.

I work from my home in Lillington and provide quotations prior to undertaking all work so that you can decide if you wish to continue. No call out fees and no charge for work I cannot fix. A flat £30 hourly fee is all I charge.

**I work Monday to Saturday so give me a call.  
Gary on 07814 236595**

### Computer Problems? Call Jan Lucas Bubbenhall

System set up  
Trouble shooting  
Personal tuition (all levels)  
**02476 307 988 / 07847 015 154**  
**[www.bootfinder.co.uk](http://www.bootfinder.co.uk)**



*Websites also undertaken*

## Flowers for special occasions

**Call 01926 429987**  
**[awaywithflowers@btinternet.com](mailto:awaywithflowers@btinternet.com)**



**Pamela Gordon 17 Boddington Close Cubbington CV32 7LT**

# WE WANT YOUR PROPERTY

CALL US TODAY FOR YOUR FREE  
VALUATION ON **02476 222 123**



FIND OUR PROPERTIES ON

 **rightmove.co.uk**  
The UK's number one property website

**Zoopla**  
Smarter property search



**shortland-horne.co.uk**





## Thoughtspiration!

GHR

*Are you suffering from stress?*

*Change negative thoughts/feelings for positive.*

*Do you: Suffer from low self esteem or depression? Have any fears or phobias?*

*Suffer anxiety or panic attacks? Wish you could change your attitude to life?*

*Want to sleep better? Have little or no will power and wish you had more?*

I may be able to help with such problems, using a variety of gentle counselling, talking therapies, hypnotherapy, rewind techniques or recursive brainworking™, in a totally relaxing confidential environment.

Please ring Pippa Jamie DipHYP(ETUK) GQHP on **07775 830987**, or send an email to [thoughtspiration@therapist.net](mailto:thoughtspiration@therapist.net) for a free, no obligation, initial consultation or just to find out more (based in Weston-under-Wetherley).

*Member of the National General Hypnotherapy Register*

*GHR qualified recursive brainworking therapist*

## Commercial & Domestic Tree Surgeons

All aspects of tree and hedge work  
carried out to industry standards

**Tree Removal**

**Fruit Tree Pruning**

**Crown Reduction & Shaping**

**Hedge Trimming & Reduction**

**Crown Thinning**

**Tree Planting**



All work carried out to BS 3998  
Full Public Liability Insurance  
NPTC Certified & FdSc Qualified

Chris Eastaff  
FdSc Arboriculture

[www.elementtreecare.co.uk](http://www.elementtreecare.co.uk)  
[info@elementtreecare.co.uk](mailto:info@elementtreecare.co.uk)

Free advice and quotations Tel: 01926 883 385

Mobile: 07790 553 110

## USEFUL INFORMATION

### **Weston village hall:**

[www.westonvillagehall.org.uk](http://www.westonvillagehall.org.uk)

[bookings@westonvillagehall.org.uk](mailto:bookings@westonvillagehall.org.uk) or 07947 638366

village website :

[www.westonunderwetherley.parishcouncil.net](http://www.westonunderwetherley.parishcouncil.net)

(website email [westonpcclerk@gmail.com](mailto:westonpcclerk@gmail.com))

**Eathorpe village hall:** [www.eathorpe.org.uk](http://www.eathorpe.org.uk) 633430  
or 632664

**Hunningham Parish Room:** 632852

**Community Transport Scheme** Contact Peter Haine: 633153 or email  
[phaine@btinternet.com](mailto:phaine@btinternet.com)



### **University Hospitals, Coventry and Warwickshire NHS Trust**

(formerly Walsgrave) 024 7696 4000

**Warwick Hospital:** 495321

**Leamington Police Station:** 451111

### **Libraries:**

All local libraries now reached on 0300 555 8171;

Weston mobile library every 3rd Friday, St Michaels Close, 9.45-10am

Further info tel 851031

### **Warwick District Council:**

Main line: 410410 or [contactus@warwickc.gov.uk](mailto:contactus@warwickc.gov.uk)

Your neighbourhood (recycling, refuse, parks, lighting): 353365

Council tax and benefits: 353368

Planning: 353367

Your council: 353362

Roads, parking, transport: 353364

Environment: 353361

Business: 353363

Housing: 353366

### **DON'T FORGET THE LIBRARY**

**IN WESTON CHURCH .....with over 400**

**books, including novels, biographies and more.**

**Open 8am-4pm every day, feel free to come in  
and have a look. Borrow as many books as you  
like, leave a small donation if you can.**

